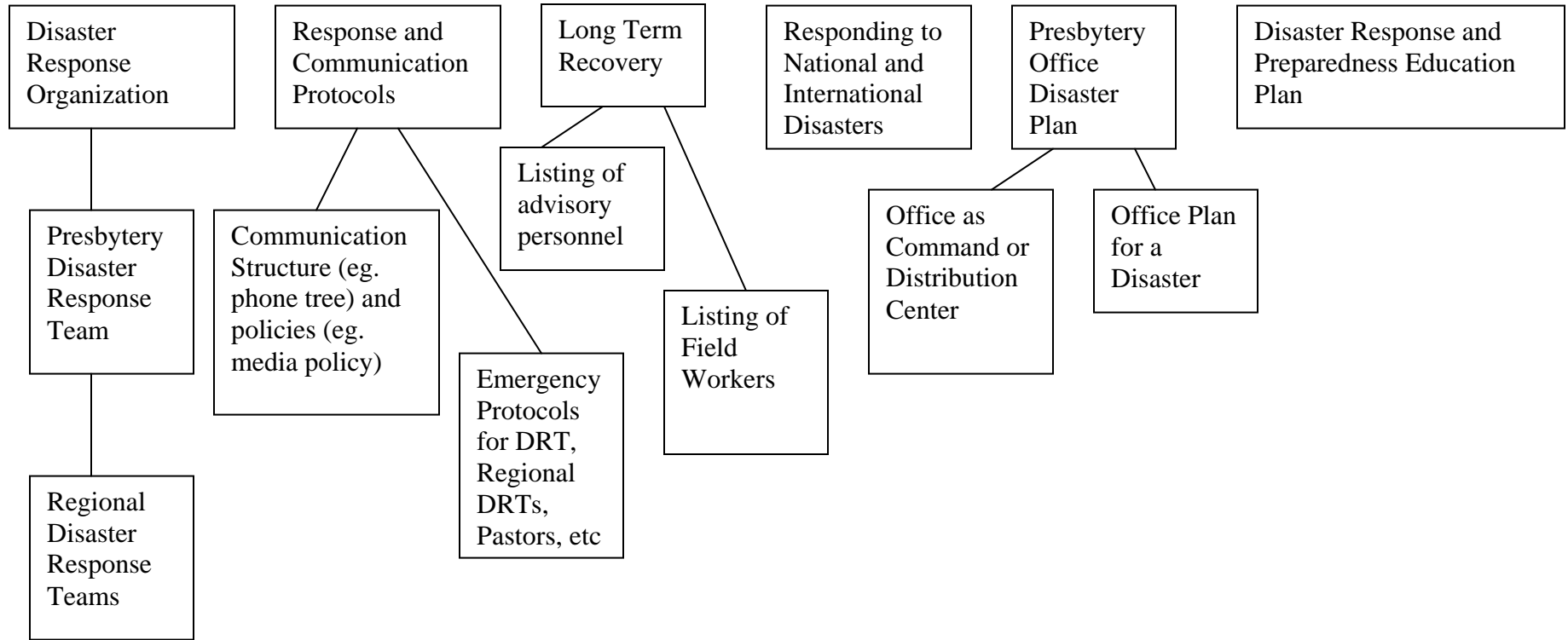


PRESBYTERY DISASTER PREPAREDNESS AND RESPONSE PLAN FLOW CHART



PRESBYTERY DISASTER PREPAREDNESS AND RESPONSE PLAN OUTLINE

The Presbytery Disaster Preparedness and Response Plan will need to define roles and responsibilities across the Presbytery for response to disasters. In order to do this the plan will need to include:

1. Disaster Response Organization
 - 1.1. Presbytery Disaster Response Team (DRT) formed at the Presbytery level.
 - 1.1.1. Define functions
 - 1.1.2. Structural considerations
 - 1.1.2.1. Lodging of accountability to Presbytery
 - 1.1.2.2. Membership
 - 1.1.2.3. Responsibilities
 - 1.1.2.4. DRT Financial Resources
 - 1.2. Regional DRT: These are people who can lead and coordinate a local response.
 - 1.2.1. Regional DRT functions
 - 1.2.2. Regional DRT membership and responsibilities
 - 1.3. Administrative Commission Activation
2. Response and Communications Protocols
 - 2.1. Development of a Presbytery phone tree or other such structure for communication
 - 2.2. Guidelines for communication and response for local pastors
 - 2.3. Guidelines for communication and response for Presbytery DRT
 - 2.3.1. Specific responsibilities in time of disaster for Presbytery DRT chair and vice chair
 - 2.4. Guidelines for communication and response for Regional DRT Co-Coordination.
 - 2.4.1. Specific responsibilities in time of disaster for Regional DRT Co-Coordination
 - 2.5. Guidelines for communication to the media
3. Long Term Recovery
 - 3.1. Create a listing of advisory personnel in areas such as: community redevelopment issues, medicine, law, finance, insurance, engineering, community organization, psychiatry, agriculture, governmental agencies, private enterprise, etc.
 - 3.2. Define the scope of PGR Long Term Response/Recovery
 - 3.3. Create listing of PGR Field Workers, their recovery skills/experiences and their availability to respond.
4. Responding to National and International Disasters
 - 4.1. Enabling congregations or the presbytery to respond to these needs by
 - 4.1.1. Organizing and sending volunteer work teams to disaster sites
 - 4.1.2. Collecting and donating money

- 4.1.3. Building or donating various disaster recovery kits

- 5. Presbytery Office Disaster Plan
 - 5.1. This plan should cover two scenarios
 - 5.1.1. Using the Presbytery Office as a response command center or a materials distribution site
 - 5.1.2. Plan to protect Presbytery resources and development of contingency operating and staffing plans in case Presbytery Office experiences a disaster

- 6. Disaster Preparedness and Response Education Plan
 - 6.1. This plan outlines educational processes that will encourage congregations to develop their own emergency or disaster response plans
 - 6.2. Provide listing of resources
 - 6.3. Provide sample planning guides, etc.